

Section 8 Rental Assistance

What is Section 8 housing?

The South Dakota Section 8 Housing Choice Voucher program can **provide low income families with rental assistance** in the form of monthly subsidies or vouchers.

Who qualifies?

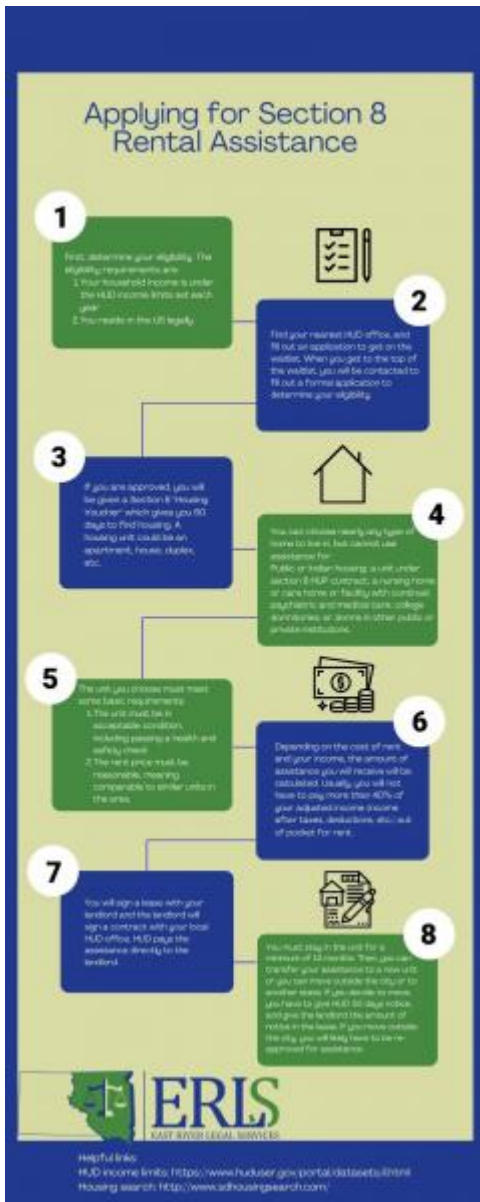
In order to qualify, you must meet the following criteria:

- You should meet PHA's definition of family.
- Your household income should be within the income limits as set by HUD each year. You can view [income limits here](http://www.huduser.org/portal/datasets/il.html) (<http://www.huduser.org/portal/datasets/il.html>).
- You should be a US citizen or a legal alien.
- If you've been evicted from a Section 8 housing or a public housing due to drug-related criminal activity, you will be ineligible to apply for Section 8 for certain period.

How do I apply?

To apply for South Dakota Section 8 Housing Choice Voucher program, you can follow these simple steps or simply visit your nearest PHA for assistance.

1. First, locate your local PHA office. You can find local PHA offices using this list of [PHA offices in South Dakota](http://www.hud.gov/offices/pih/pha/contacts/states/sd.cfm) (<http://www.hud.gov/offices/pih/pha/contacts/states/sd.cfm>).
2. If you can't locate or have trouble contacted your local PHA, you can contact [HUD Field Office](http://portal.hud.gov/hudportal/HUD?src=/localoffices) (<http://portal.hud.gov/hudportal/HUD?src=/localoffices>).
3. Submit your application at PHA office. You will need to provide many details during the application process such as income of each member of your household, your current address and phone number, name and date of birth of each household member, etc. Ideally, you should call PHA before visiting the office for filing the application. This way, you will know what documents to take with you and the specific information that PHA will require in order to process your application.



Last updated on May 19, 2022.

[Housing](#)

Files

[Applying for Section 8 Rental Assistance.pdf](#)

Print

Table of Contents